

SSFA comparison

Template to process all surfaces acquired with the Nanofocus μ surf Custom with the 100x/0.80 objective.

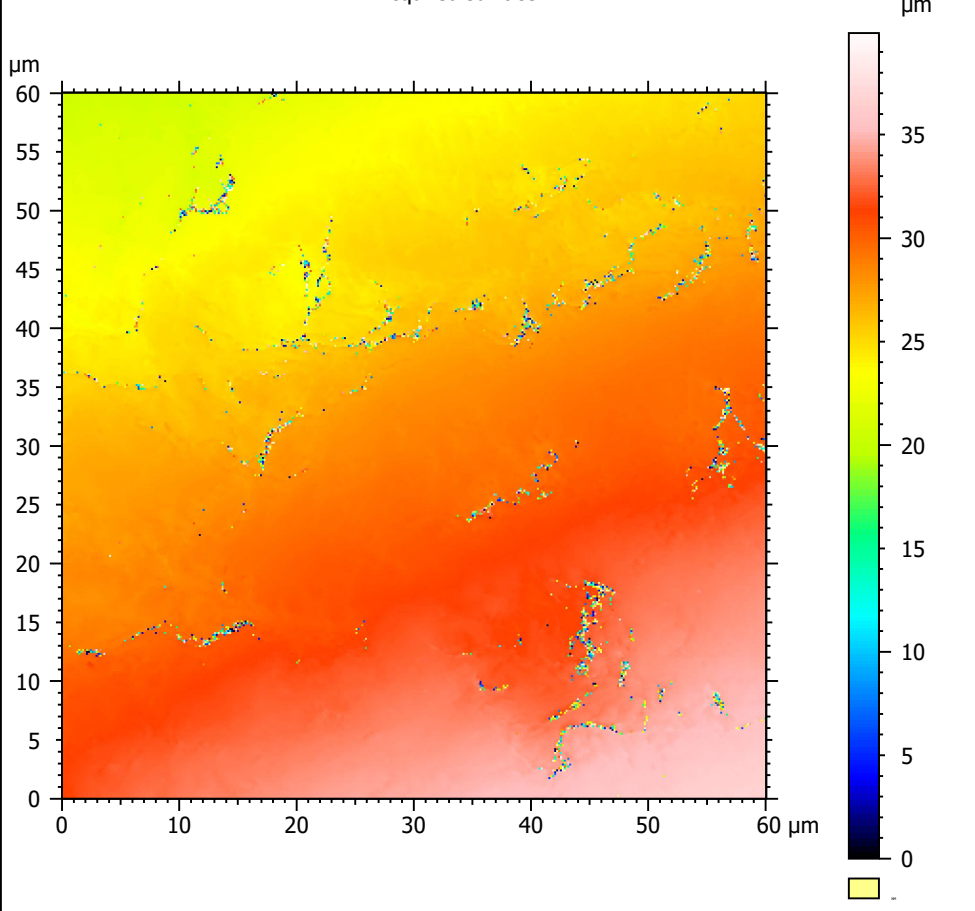


A. Processing

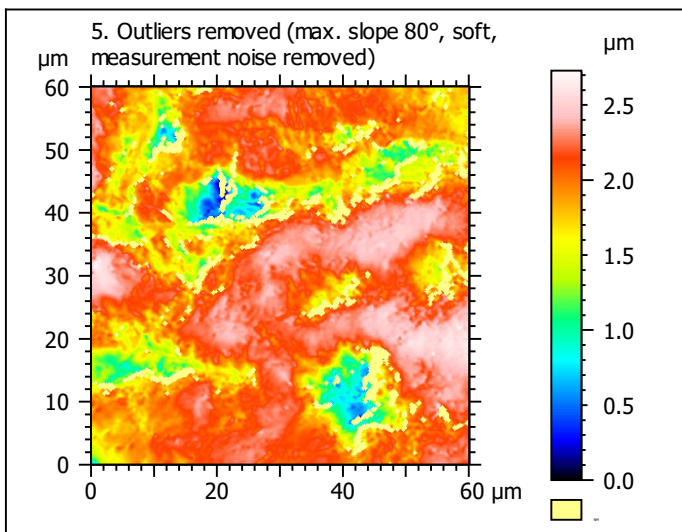
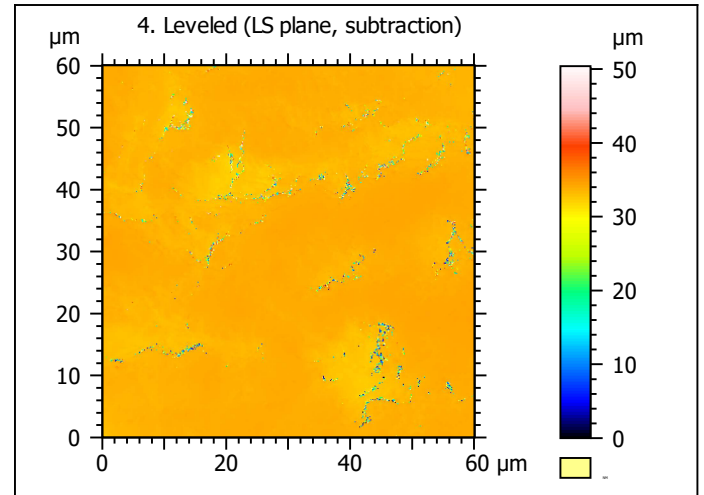
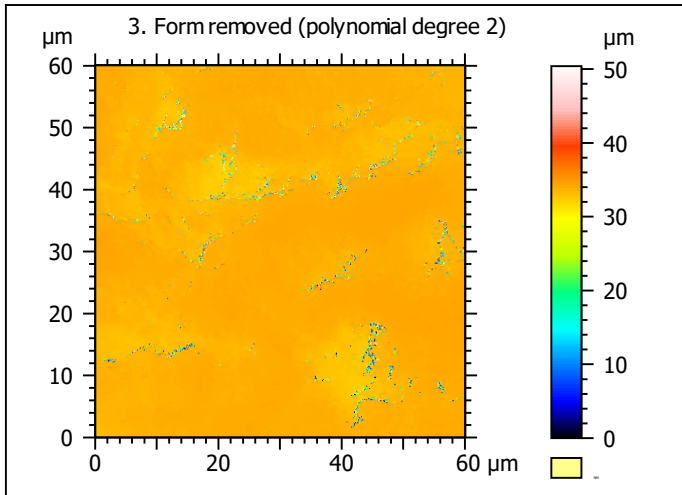
Identity card

| | | | |
|------------------|---|--------|--|
| Name: | capor_2CC4R1_txP4_#1_1_100xL_4 | | |
| File path: | D:\Data\3Ddata\SSFA\GuineaPigs\Original surfaces\capor_2CC4R1_txP4_#1_1_100xL_4.nms | | |
| Studiable type: | Surface | | |
| Axis: | X | | |
| Length: | 60.06 | μm | |
| Size: | 370 | points | |
| Spacing: | 0.1628 | μm | |
| Axis: | Y | | |
| Length: | 60.06 | μm | |
| Size: | 370 | points | |
| Spacing: | 0.1628 | μm | |
| Axis: | Z | | |
| Layer type: | Topography | | |
| Length: | 39.91 | μm | |
| Size: | 64712 | digits | |
| Spacing: | 0.0006168 | μm | |
| NM-points ratio: | 0.1928 % (264 Pts) | | |

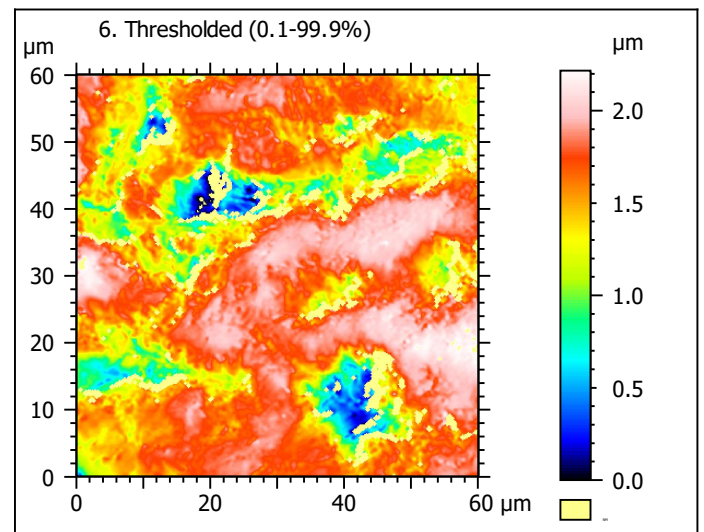
1. Acquired surface



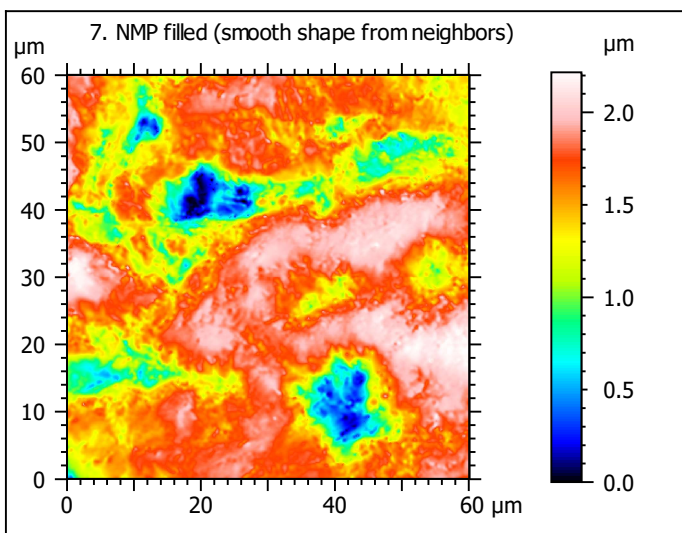
Note that the surfaces have been preprocessed (mirrored in z and cut to 60x60 μ m) according to Winkler et al. (2019), PNAS 116: 1325-1330.



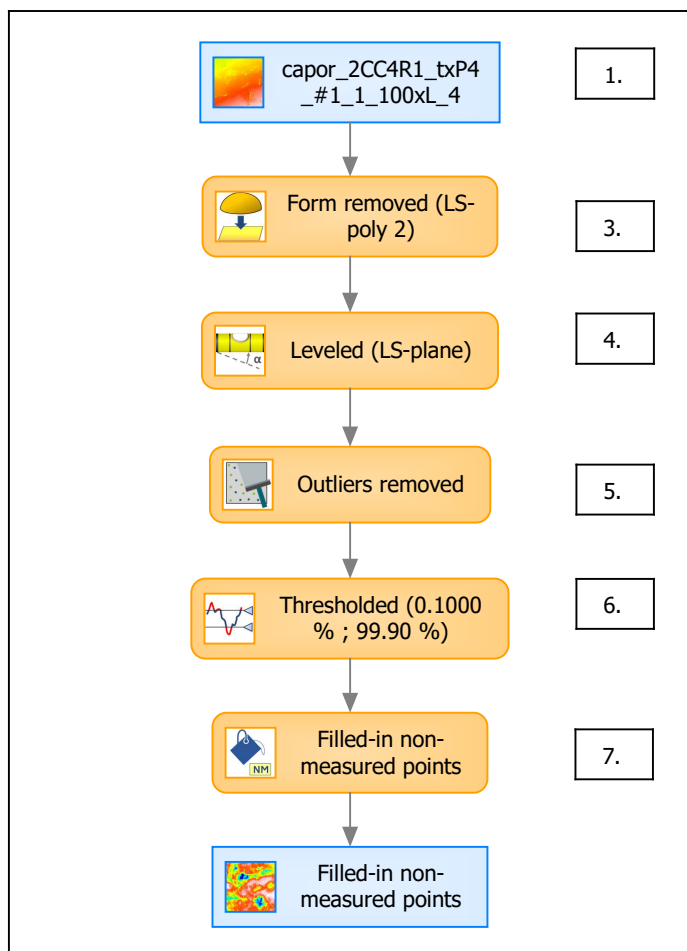
| Identity card | |
|------------------|--|
| Name: | capor_2CC4R1_txP4_...e) > Outliers removed |
| Axis: | Z |
| NM-points ratio: | 7.719 % (10567 Pts) |



| Identity card | |
|------------------|--|
| Name: | capor_2CC4R1_txP4_...0.1000 % ; 99.90 %) |
| Axis: | Z |
| NM-points ratio: | 7.902 % (10818 Pts) |



B. Summary



Identity card

| | | | |
|-----------------|---|--------|--|
| Name: | capor_2CC4R1_txP4_#1_1_100xL_4 > Form removed (LS-poly 2...resholded (0.1000 % ; 99.90 %) > Filled-in non-measured points | | |
| Studiable type: | Surface | | |
| Axis: | X | | |
| Length: | 60.06 | μm | |
| Size: | 370 | points | |
| Spacing: | 0.1628 | μm | |
| Axis: | Y | | |
| Length: | 60.06 | μm | |
| Size: | 370 | points | |
| Spacing: | 0.1628 | μm | |
| Axis: | Z | | |
| Layer type: | Topography | | |
| Length: | 2.217 | μm | |
| Size: | 3594 | digits | |
| Spacing: | 0.0006168 | μm | |

